

**K-LEVEL**

LEVEL UP YOUR PRECISION

# MEASURING TECHNOLOGY. SIMPLE. INTELLIGENT.

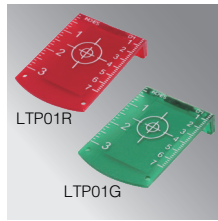
Professional Sales Program 2025





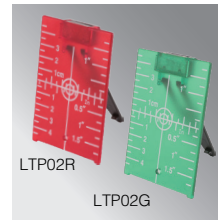
**LG01R/LG01G**

-Laser Glasses



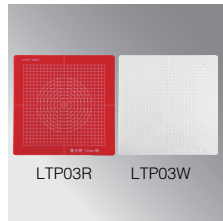
**LTP01R/ LTP01G**

-Laser Target Plate



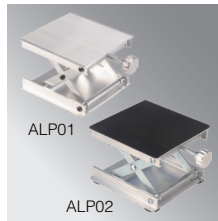
**LTP02R/ LTP02G**

-Laser Target Plate



**LTP03R-150/200/300  
LTP03W-150/200/300**

-Laser Target Plate



**ALP01**

-Aluminum Lifting Platform  
-H: 90mm

**ALP02**

-Aluminum Lifting Platform  
with Protective Pad  
-H: 90mm



**LLB04A/ 04B**

-L Bar Bracket with Magnet  
-WB04A: 1/4"-20 Thread  
-WB04B: 5/8"-11 Thread



**LLB06**

-Bracket with Magnet  
-Working Angle from 0° to 90°  
-with 1/4"-20 Adapter and 5/8"-11 Adapter



**LLB18A**

-Bracket with 1/4"-20 Thread



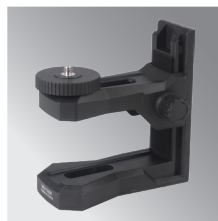
**LLB19**

-L Bar Bracket with Magnet  
1/4"-20 Thread



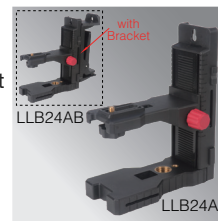
**LLB22A**

-L Bar Bracket with Magnet  
1/4"-20 Thread



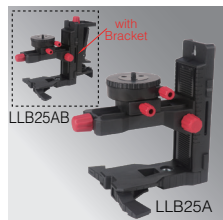
**LLB23A**

-L Bar Bracket with Magnet  
1/4"-20 Thread



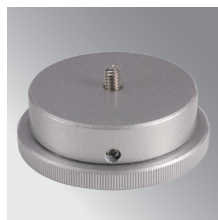
**LLB24A/ 24AB**

-L Bar Bracket with Magnet  
1/4"-20 Thread



**LLB25A/ 25AB**

-L Bar Bracket with Magnet  
1/4"-20 Thread



**LLRA01**

-Laser Level Rotating Adapter  
-Top: 1/4"-20 Bottom: 5/8"-11  
-OD65mm



**LLRA09A/ 09B**

-Laser Level Rotating Adapter  
-LLRA09A: 1/4"-20 Thread  
-LLRA09B: 5/8"-11 Thread

**LLRA02**

-Laser Level Rotating Adapter  
1/4"-20 Thread



**LLRA04**

-Laser Level Rotating Adapter  
1/4"-20 Thread

**LLRA05**

-High Precision  
-Laser Level Rotating Adapter  
1/4"-20 Thread



**LLA01**

-Laser Level Adapter  
1/4"-20 to 5/8"-11

**LLA04**

-Laser Level Adapter  
5/8"-11 to 5/8"-11



**LLA02**

-Aluminum  
-Laser Level Adapter  
5/8"-11 to 1/4"-20

**LLA05**

-Plastic  
-Laser Level Adapter  
5/8"-11 to 1/4"-20



**RLB01A**

-Rotary laser bracket  
-All metal design  
-Micro adjust the direction of the vertical plane



**RLB02A/02B**

-Rotary laser bracket  
-All metal design



**RLTB01**

-Laser Tilting Base  
-Transforms Any Laser into a "Single Axis Slope Laser"



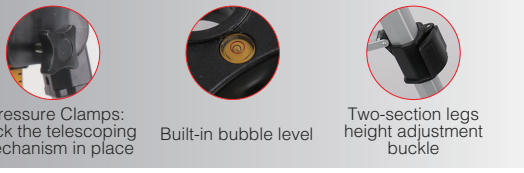


**SP1/ SP2 Support Pole**

- Detachable Design
- High-Strength Aluminum Construction
- Equipped a 5/8"-11 Adapter and one Extra 1/4"-20 Transit Adapter
- Includes Carry Bag

**Model No.:**

- SP136:** Support Pole 1 Series (w/o Tripod) 3.6m (Regular Height)  
**SP236:** Support Pole 2 Series (with Tripod) 3.6m (Regular Height)  
**SP130/ SP140/ SP142/ SP148:** Support Pole 3.0/ 4.0/ 4.2/ 4.8m for Option (w/o Tripod)  
**SP230/ SP240/ SP242/ SP248:** Support Pole 3.0/ 4.0/ 4.2/ 4.8m for Option (with Tripod)



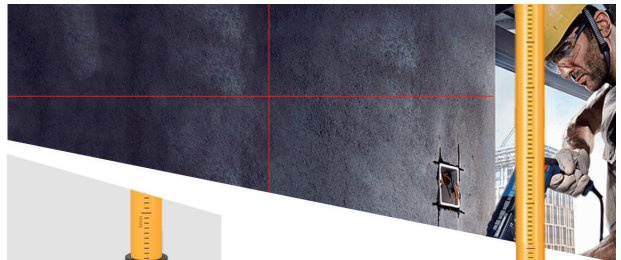
Pressure Clamps: Lock the telescoping mechanism in place

Built-in bubble level

Two-section legs height adjustment buckle

**SP136**  
3.6M

**SP236**  
3.6M

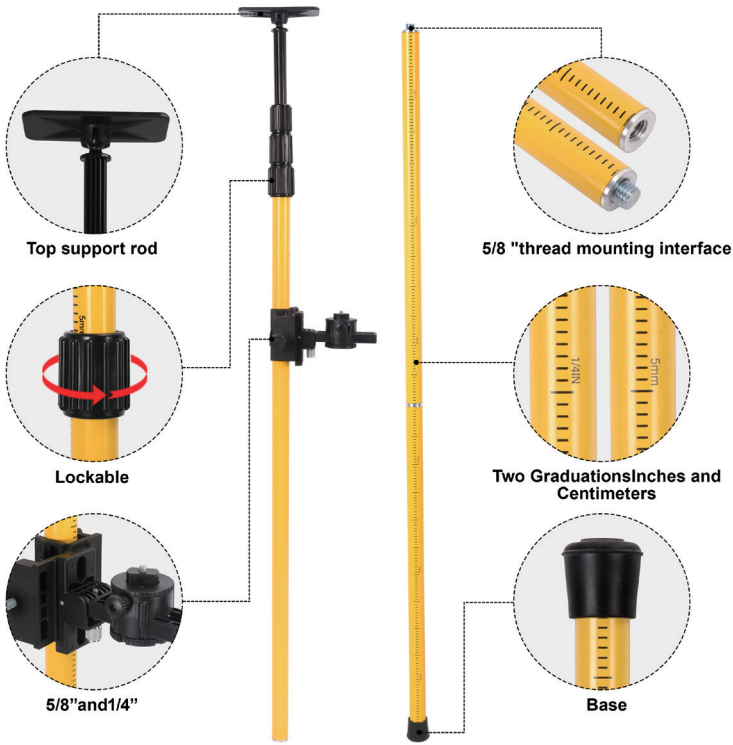


**5CM POWERFUL SPRING**  
Provides a greater adjustable range and a more stable fixed requirement

**FOOT AND HEAD NON-SLIP PLATE**



**HEIGHT ADJUSTABLE**



Top support rod

5/8 "thread mounting interface

Lockable

Two Graduations Inches and Centimeters

5/8" and 1/4"

Base

**SP3 LIGHTWEIGHT SUPPORT POLE**

- Aluminum Construction for Strength and Lightweight
- Equipped with 1/4"-20 Adapter and one Extra 5/8"-11 Transit Adapter
- Quick Extension with Compression Lock
- Includes Carry Bag

**Model No.:**

- SP330:** Support Pole 3 Series, 3.0m Height  
**SP336/ SP340/ SP342/ SP348:** Support Pole, 3 Series, 3.6/ 4.0/ 4.2/ 4.8m







**How to adjust the height?**

- 1 There are "lock" and "unlock" buttons on both sides of the pole.
- 2 Press the "push-unlock" button.
- 3 Press and hold the orange pinch-prevent button and pull the pole upwards until it reaches the right height.
- 4 Press the "push-lock" button to fix the position of the pole.

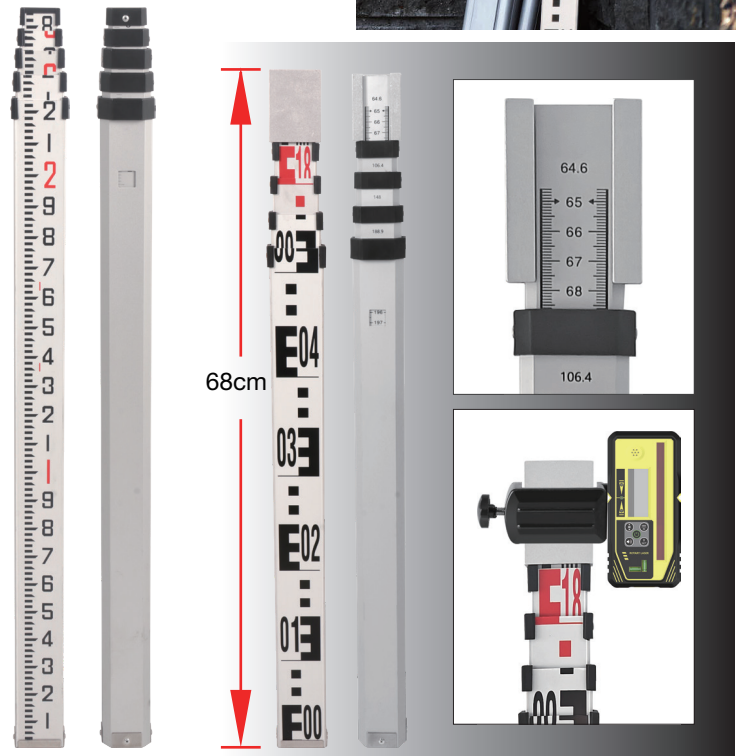
Model No.	CSP100	CSP160	CSP290
Size	60-100cm	90-160cm	145-290cm
Bearing Load	60kg	60kg	60kg
Packing	4 /inner box 8 / outer carton	4 /inner box 8 / outer carton	4 /inner box 8 / outer carton


**QUICK RELEASE LEVER**

Press and hold the orange pinch-prevent button and pull the pole





LR350-2T/2Q

LR240-2T/2Q

L3S3-55

L8S8-35

L3S3-235



## BS1 Series Black Steel Laser Level Tripod

### Economic Black Steel Style

- Black Color (B)
- High Strength Steel Material (S)
- 1 Series (1)

### For Option



### Model No.:

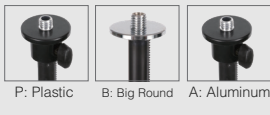
**BS1-040:** Black Color, Steel, 1Series, 0.40 Meter, Standard 5/8"-11 Thread.

**BS1-120:** Black Color, Steel, 1Series, 1.20 Meter, Standard 5/8"-11 Thread.

**BS1-150:** Black Color, Steel, 1Series, 1.50 Meter, Standard 5/8"-11 Thread.



### Head Style



## BA3 Series Black Aluminum Laser Level Tripod

### Professional Buliding Black Aluminum Style

- Black Color (B)
- Oxide Aluminum Material (A)
- 3 Series (3)
- With Handle (0.45 Meter not have)
- Horseshoe Foot (H)
- Plastic Head with 5/8"-11 Thread (P) (0.45/ 1.20/ 1.60 Meter)
- Big Round Galvanized Head 5/8"-11 Thread (B) (1.80/2.00 Meter)
- Aluminum Head with 5/8"-11 Thread (A) (3.00 Meter)

### For Option



### For Option

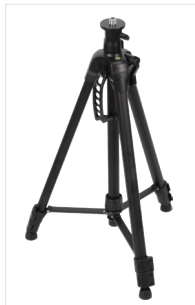
- Center Hook
- Rubber Anti-Skid Cover
- Removable Tilting Head with 1/4"-20 Thread (R)

### Model No.:

**BA3-045HP/ 120HP/ 160HP:** 0.45/ 1.20/ 1.60 Meter, with Plastic Head

**BA3-180HB/ 200HB:** 1.80/ 2.00 Meter, with Big Round Head

**BA3-300HA:** 3.00 Meter, with Aluminum Head



### Removable 1/4"-20 Thread



## BA5 Series Black Aluminum Laser Level Tripod

### Light-duty High-Quality Black Aluminum Style

- Black Color (B)
- Oxide Aluminum Material (A)
- 5 Series (5)
- Horseshoe Style Foot (H)
- Fixed Tilting Head with Removable 1/4"-20 Thread (F)
- Height Customized

### For Option



### Model No.:

**BA5-120HF:** 1.20m, Fixed Tilting Head with Removable 1/4"-20 Thread

**BA5-150HF:** 1.50m, Fixed Tilting Head with Removable 1/4"-20 Thread







SA1-150HP

**For Option**



Removable Tilting Head

**SA1 Series Silver Aluminum Laser Level Tripod**

**Economic Silver Aluminum Style**

- Silver Color (S)
- Oxide Aluminum Material (A)
- 1 Series (1)
- Horseshoe Style Foot (H)
- Standard Head: Plastic Head 5/8"-11 Thread (P)
- Removable Tilting Head with Removable 1/4"-20 Thread (R)

**Model No.:**

**SA1-045HP:** 0.45m, Plastic Head 5/8"-11 Thread

**SA1-120HP:** 1.20m, Plastic Head 5/8"-11 Thread

**SA1-150HP:** 1.50m, Plastic Head 5/8"-11 Thread

**SA1-045HPR:** 0.45m, Plastic Head, Add Removable Tilting Head with Removable 1/4"-20 Thread

**SA1-120HPR:** 1.20m, Plastic Head, Add Removable Tilting Head with Removable 1/4"-20 Thread

**SA1-150HPR:** 1.50m, Plastic Head, Add Removable Tilting Head with Removable 1/4"-20 Thread



SA2-150HP

**Head Style**



P: Plastic



**SA2 Series Silver Aluminum Laser Level Tripod**

**High-Quality Silver Aluminum Style**

- Silver Color (S)
- Oxide Aluminum Material (A)
- 2 Series (2)
- Horseshoe Style Foot (H)
- Standard Head: Plastic Head 5/8"-11 Thread (P)

**Head for Option**

- Aluminum Head 5/8"-11 Thread (A)
- Big Round Galvanized Head 5/8"-11 Thread (B)
- Removable Tilting Head with Removable 1/4"-20 Thread (R)

**Height for Option 1.20/1.50/1.80m**

**Model No.:**

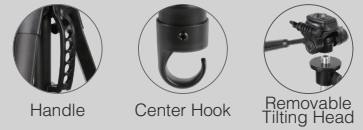
**SA2-120HP:** 1.20m, Plastic Head 5/8"-11 Thread

**SA2-120HA:** 1.20m, Aluminum Head 5/8"-11 Thread

**SA2-120HB:** 1.20m, Big Round Head 5/8"-11 Thread

**SA2-120HPR:** 1.20m, Plastic Head, Add Removable Tilting Head with Removable 1/4"-20 Thread

**For Option**



Handle

Center Hook

Removable Tilting Head



A: Aluminum



B: Big Round



SA11-050F

**For Option**



LLA01



**SA11 Series Mini Silver Aluminum Laser Level Tripod**

**Mini High-Quality Silver Aluminum Style**

- High Quality Style
- Silver Color (S)
- Oxide Aluminum Material (A)
- 11 Series (11)
- Fixed Tilting Head with Removable 1/4"-20 Thread (F)
- Height Customized

**Model No.:**

**SA11-050F:** Silver, 0.50m, Fixed Tilting Head with Removable 1/4"-20 Thread

**SA11-100F:** Silver, 1.00m, Fixed Tilting Head with Removable 1/4"-20 Thread



BT150P



BT150

## BT150 Professional Buliding Tripod

### Professional Buliding Black Aluminum Style

- Black Color
- Oxide Aluminum Material
- Horseshoe Foot
- Plastic Head with 5/8"-11 Thread (BT150P)
- Removable Tilting Head with 1/4"-20 Thread (BT150)

#### Model No.:

**BT150P:** 1.58m, with Plastic Head with 5/8"-11 Thread, 1.1kg, Working Height 570-1580mm, Tripod Height 610-1280mm, Elevating Range 395mm

**BT150:** 1.58m, with Removable Tilting Head with 1/4"-20 Thread, 1.3kg, Working Height 570-1580mm, Tripod Height 610-1280mm, Elevating Range 395mm



BT152



BT250

## BT152/ BT250 Professional Buliding Ttripod

### Professional Buliding Tripod

- Oxide Aluminum Material
- Adjustable toe Foot
- Flat Head (BT152) 5/8"-11 Thread
- 1/4"-20 Thread (BT250)

#### Model No.:

**BT152:** Working Height 690-1565mm, Tripod Height 735-1575mm, 2.00kg

**BT250:** Working Height 900-2070mm, Tripod Height 950-2170mm, 2.85kg, Elevating Range 280mm



#### For Option

Removable Tilting Head

Cover



BT250

## ETT20A Medium-Duty Elevator Tripod

### Medium-Duty Aluminum Elevator Tripod

- Black Color (B)
- Sections 3 (S3) and Section 4 (S4)

#### For Option

- Rubber Anti-Skid Cover
- Removable Tilting Head with 1/4"-20 Thread (R)

#### Model No.:

**ETT20A-120BS3:** Working Height 450-1200mm, Tripod Height 490-1270mm, 1.35kg, 3 Sections, Elevating Range 270mm

**ETT20A-160BS3:** Working Height 550-1600mm, Tripod Height 600-1690mm, 1.55kg, 3 Sections, Elevating Range 370mm

**ETT20A-180BS3:** Working Height 620-1800mm, Tripod Height 660-1890mm, 1.70kg, 3 Sections, Elevating Range 370mm

**ETT20A-230BS3:** Working Height 780-2300mm, Tripod Height 830-2400mm, 2.05kg, 3 Sections, Elevating Range 370mm

**ETT20A-300BS4:** Working Height 850-3000mm, Tripod Height 900-3130mm, 2.45kg, 4 Sections, Elevating Range 370mm





## ERJA10 Auto Level Tripod



### Flat Head

#### 1) ERJA10-FAT:

Flat Head OD126mm, Twist Lock, 960-1600mm, 2.20Kg

#### 2) ERJA10-FAD:

Flat Head OD126mm, Dual Lock, 960-1500mm, 2.70Kg



### Dome Head

#### 1) ERJA10-DAT:

Dome Head OD126mm, Twist Lock, 960-1600mm, 2.20Kg

#### 2) ERJA10-DAD:

Dome Head OD126mm, Dual Lock, 960-1500mm, 2.70Kg



### Big Round Head

#### 1) ERJA10-BAT:

Big Round Head OD133mm, Twist Lock, 960-1600mm, 2.30Kg

#### 2) ERJA10-BAD:

Big Round Head OD133mm, Dual Lock, 960-1500mm, 2.80Kg



### For Option



Tripod Support

## ETT30A High-Quality Heavy Duty Elevator Tripod

### High-Quality Heavy Duty Elevator Tripod

#### Model No.:

**ETT30A-160:** Working Height 660-1600mm, Tripod Height 730-1700mm, 5.40kg, Elevating Range Inner/ Outer Tube 410/ 420mm

**ETT30A-230:** Working Height 900-2300mm, Tripod Height 990-2440mm, 6.10kg, Elevating Range Inner/Outer Tube 510/550mm

**ETT30A-270:** Working Height 1100-2700mm, Tripod Height 1230-3000mm, 6.50kg, Elevating Range Inner/Outer Tube 550/590mm

**ETT30A-330:** Working Height 1200-3300mm, Tripod Height 1330-3500mm, 7.50kg, Elevating Range Inner/ Outer Tube 730/760mm

**ETT30A-400S:** Working Height 1570-4000mm, Tripod Height 1650-4150mm, 8.60kg, Elevating Range Inner/ Outer Tube 730/760mm, with Tripod Support



# **K-LEVEL**

LEVEL UP YOUR PRECISION

📄 MOUNTLASER

💬 181 1233 4566

📱 +86-181 1233 4566

✉ M@K-LEVEL.COM

🌐 WWW.K-LEVEL.COM

**MOUNT LASER (CHANGZHOU) INSTRUMENT CO.,LTD**